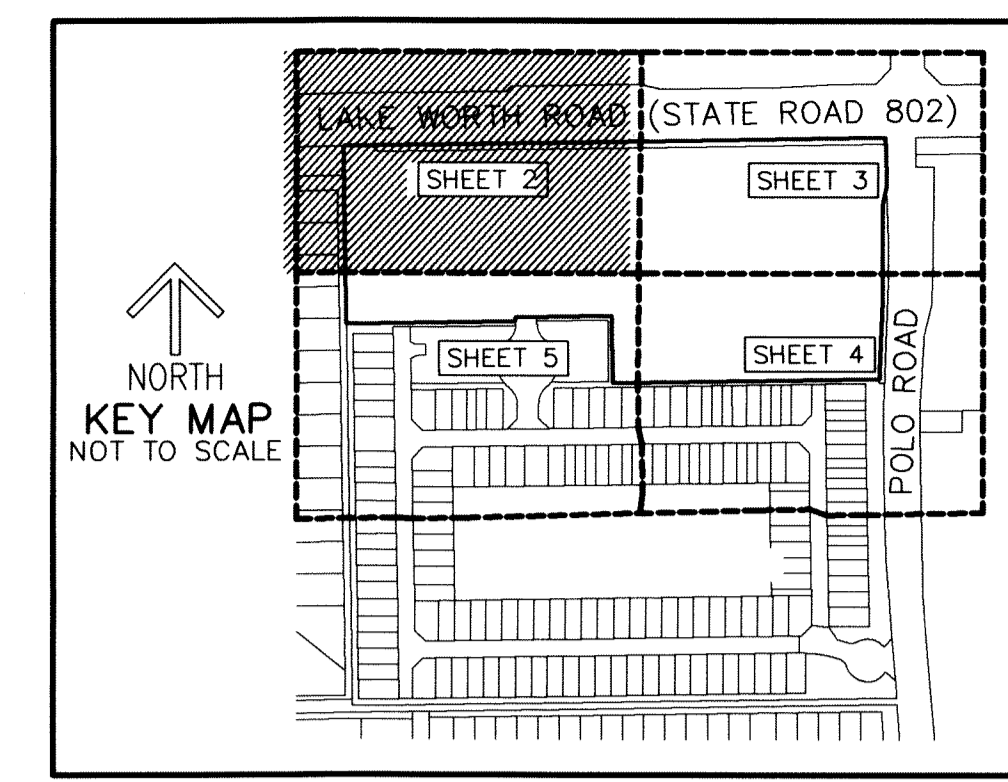


THIS INSTRUMENT PREPARED BY
 DAVID P. LINDLEY
 OF
CAULFIELD and WHEELER, INC.
 SURVEYORS - ENGINEERS - PLANNERS
 7900 GLADES ROAD, SUITE 100
 BOCA RATON, FLORIDA 33434 - (561)392-1991
 CERTIFICATE OF AUTHORIZATION NO. LB3591

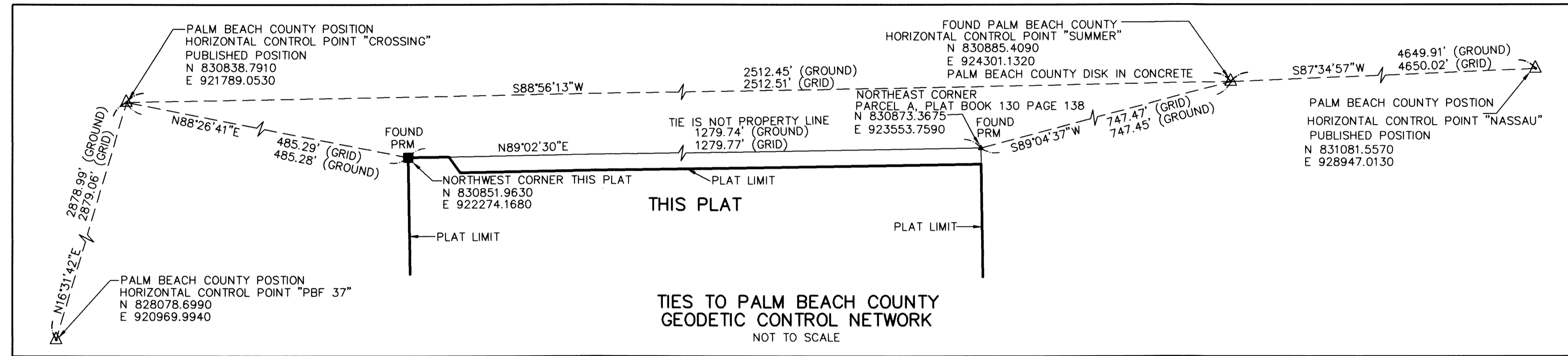
POLO LEGACY MXPD REPLAT

A MIXED USE PLANNED DEVELOPMENT
 BEING A REPLAT OF PARCEL A, POLO LEGACY MXP, ACCORDING TO THE PLAT THEREOF, AS RECORDED IN PLAT BOOK 130, PAGES 138 THROUGH 144 OF THE PUBLIC RECORDS OF PALM BEACH COUNTY FLORIDA LYING IN SECTION 29, TOWNSHIP 44 SOUTH, RANGE 42 EAST, PALM BEACH COUNTY, FLORIDA



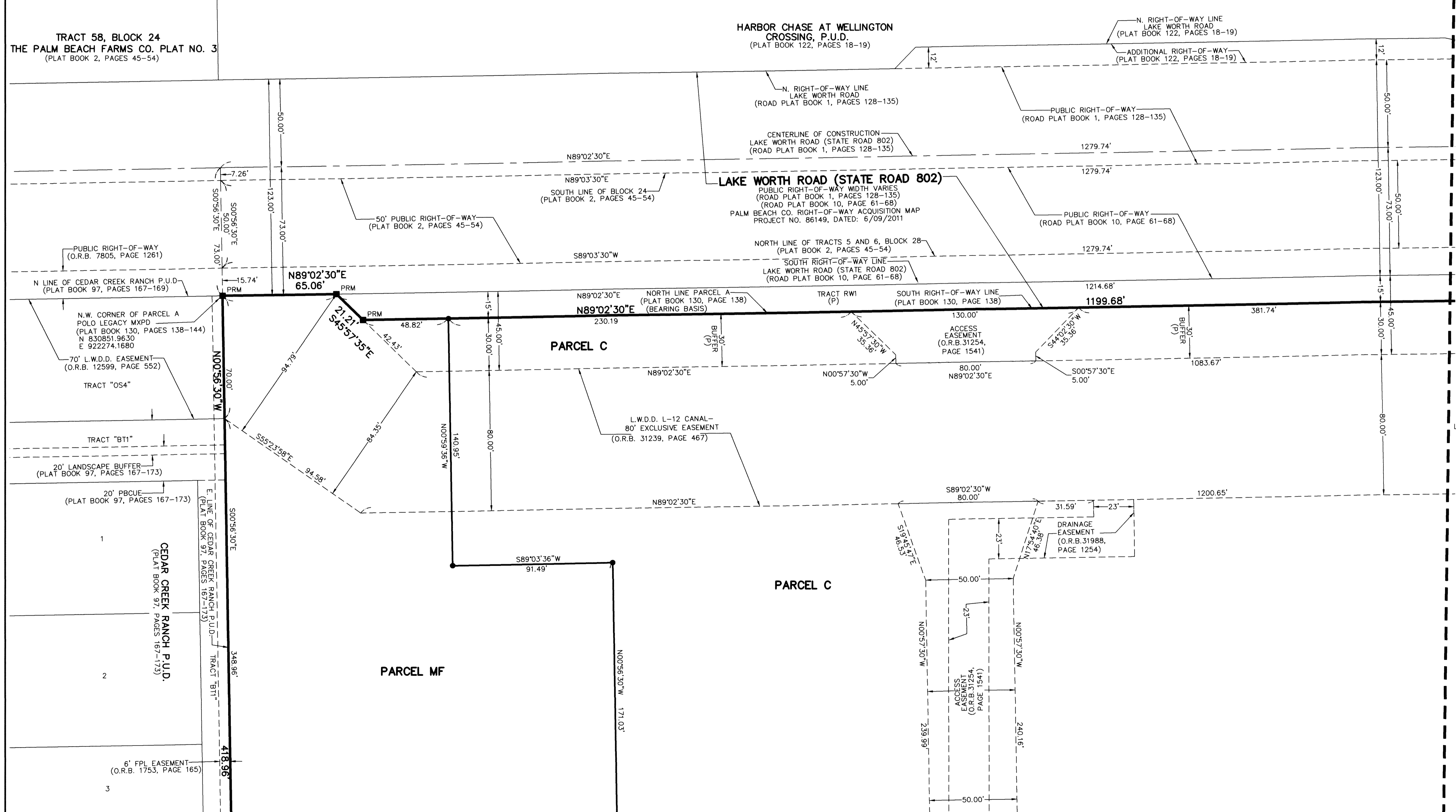
40

SHEET 2 OF 5

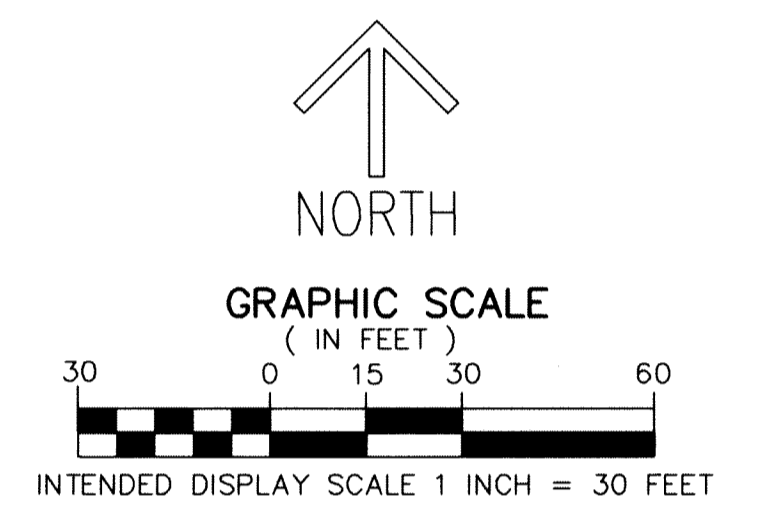


TRACT 58, BLOCK 24
 THE PALM BEACH FARMS CO. PLAT NO. 3
 (PLAT BOOK 2, PAGES 45-54)

HARBOR CHASE AT WELLINGTON
 CROSSING, P.U.D.
 (PLAT BOOK 122, PAGES 18-19)



MATCH LINE SHEET 3



- LEGEND/ABBREVIATIONS**
- CL - CENTERLINE
 - Δ - DELTA (CENTRAL ANGLE)
 - CB - CHORD BEARING
 - CD - CHORD DISTANCE
 - DE - DRAINAGE EASEMENT
 - E - EASTING (WHEN USED WITH COORDINATES)
 - L - ARC LENGTH
 - LB - LICENSED BUSINESS
 - LMAE - LAKE MAINTENANCE ACCESS EASEMENT
 - LME - LAKE MAINTENANCE EASEMENT
 - L.W.D.D. - LAKE WORTH DRAINAGE DISTRICT
 - MXP - MIXED USE PLANNED DEVELOPMENT
 - N - NORTHING (WHEN USED WITH COORDINATES)
 - O.R.B. - OFFICIAL RECORD BOOK
 - PBCUE - PALM BEACH COUNTY UTILITY EASEMENT
 - PRAS - PRIVATE RESIDENTIAL ACCESS STREET
 - PC - POINT OF CURVATURE
 - PT - POINT OF TANGENCY
 - PNT - POINT OF NON-TANGENCY
 - R - RADIUS
 - R/W - RIGHT-OF-WAY
 - UE - UTILITY EASEMENT
 - WMAE - WATER MANAGEMENT ACCESS EASEMENT
 - (P) - POLO LEGACY MXP, ACCORDING TO THE PLAT THEREOF, AS RECORDED IN PLAT BOOK 130, PAGES 138 THROUGH 144 OF THE PUBLIC RECORDS OF PALM BEACH COUNTY FLORIDA
 - PRM - DENOTES SET PERMANENT REFERENCE MONUMENT 4" x 4" x 24" CONCRETE MONUMENT WITH ALUMINUM DISK STAMPED "C&W PRM LB3591" UNLESS OTHERWISE NOTED
 - PCP - DENOTES SET PERMANENT CONTROL POINT NAIL AND METAL DISK STAMPED "PCP LB3591"
 - - DENOTES SET IRON ROD AND CAP STAMPED LB3591
 - △ - DENOTES HORIZONTAL CONTROL POINT
 - ▲ - DENOTES FOUND PERMANENT REFERENCE MONUMENT NAIL AND DISC STAMPED "PRM" LB 3591

NOTES
COORDINATES, BEARINGS AND DISTANCES
 COORDINATES SHOWN ARE GRID
 DATUM = NAD 83 (1990 ADJUSTMENT)
 ZONE = FLORIDA EAST
 LINEAR UNIT = US SURVEY FEET
 COORDINATE SYSTEM 1983 STATE PLANE
 TRANSVERSE MERCATOR PROJECTION
 ALL DISTANCES ARE GROUND UNLESS OTHERWISE NOTED
 SCALE FACTOR = 1.0000236
 GROUND DISTANCE X SCALE FACTOR = GRID DISTANCE
 BEARINGS AS SHOWN HEREON ARE GRID DATUM,
 NAD 83 (1990 ADJUSTMENT), FLORIDA EAST ZONE.

MATCH LINE SHEET 5